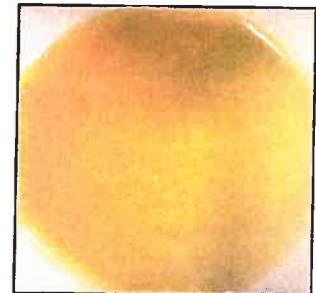




CV SCIENCES™

Certificate of Analysis
October 9, 2020

Sample ID: FP-20-0632
Product name: PlusCBD Maximum Strength
Liquid - with Monk Fruit
Batch/Lot#: 07376275
Strength: 1.86 fl. oz 1500mg
- 25mg per serving
Expiration: 09/22
Analyst: HP



| <u>Physical properties</u> | <u>Result</u> | <u>Method</u> |
|----------------------------|---------------|---------------|
| Appearance | Pass | Organoleptic |
| Color | Pass | Organoleptic |
| Aroma | Pass | Organoleptic |

| <u>Cannabinoid:</u> | <u>mg:</u> | <u>Method:</u> |
|----------------------------|------------------|----------------|
| CBD | 1707.20 | HPLC |
| CBDV | 7.70 | HPLC |
| CBDA | ND | HPLC |
| CBGA | ND | HPLC |
| CBG | 2.75 | HPLC |
| CBN | ND | HPLC |
| Δ ⁹ -THC | 5.96 | HPLC |
| CBC | 19.88 | HPLC |
| THCA | ND | HPLC |
| Total cannabinoids: | 1747.4 mg | |
| Sample size: | 49.50 g | |
| THC by mass: | 0.0120 % | |

ND = NOT DETECTED

Hayley Palmer

OCT 09 2020

Vandana Kothari

OCT 09 2020

Analyst _____ Date _____
Hayley Palmer, B.S.
Quality Analyst

Reviewed By _____ Date _____
Vandana Kothari, M.S., B.Pharm.
Director of Quality

This Certificate of Analysis has been generated to document product test results. The "Reviewed By" signature does not indicate finished product release for distribution.



Certificate of Analysis

CV Sciences, Inc.

10070 Barnes Canyon Road
San Diego, CA 92121
Vandana Kothari

Sample

2010DBL0032.9474

Batch FP-20-0632
Lot 07376275

Ordered 10/5/2020

Completed 10/8/2020

PlusCBD Maximum Strength Liquid - 25mg with Monk Fruit 1.86 fl. oz 1500mg EXP: 09/22

Cannabinoids

| | 1755 | 3.55 | 49.5 |
|---------------------|-------------|--------|-------------------------|
| Total CBD (mg/unit) | % Total CBD | | Unit weight (g) |
| Cannabinoid | LOQ | Mass % | Mass Concentration mg/g |
| CBD | 0.05 | 3.5 | 35.5 |
| CBDA | 0.05 | <LOQ | <LOQ |
| d9-THC | 0.05 | <LOQ | <LOQ |
| THCA-A | 0.05 | <LOQ | <LOQ |
| d8-THC | 0.05 | <LOQ | <LOQ |
| THCV | 0.05 | <LOQ | <LOQ |
| CBDV | 0.05 | <LOQ | <LOQ |
| CBDVA | 0.05 | <LOQ | <LOQ |
| CBGA | 0.05 | <LOQ | <LOQ |
| CBG | 0.05 | <LOQ | <LOQ |
| CBN | 0.05 | <LOQ | <LOQ |
| CBC | 0.05 | <LOQ | <LOQ |
| CBL | 0.05 | <LOQ | <LOQ |

Pesticides/Plant Growth Regulators

| Pesticides | Status | Sample (PPB) | LOQ (PPB) |
|---------------|--------|--------------|-----------|
| Acequinocyl | PASS | <LOQ | 10 |
| Abamectin | PASS | <LOQ | 10 |
| Bifenazate | PASS | <LOQ | 10 |
| Fenoxycarb | PASS | <LOQ | 10 |
| Fludioxonil | PASS | <LOQ | 10 |
| Imidacloprid | PASS | <LOQ | 10 |
| Myclobutanil | PASS | <LOQ | 10 |
| Pyrethrin | PASS | <LOQ | 10 |
| Spinosad | PASS | <LOQ | 10 |
| Spiromesifen | PASS | <LOQ | 10 |
| Spirotetramat | PASS | <LOQ | 10 |
| Tebuconazole | PASS | <LOQ | 50 |

| Plant Growth Regulators | | | |
|-------------------------|------|------|----|
| Daminozide | PASS | <LOQ | 10 |

Residual Solvents

| Compound | Status | Limit (PPM) |
|--------------------|--------|-------------|
| Propane | PASS | 500 |
| Methanol | PASS | 500 |
| Isobutane | PASS | 500 |
| Ethanol | PASS | 500 |
| Isopropanol | PASS | 500 |
| Isopentane | PASS | 500 |
| n-Butane | PASS | 500 |
| n-Hexane | PASS | 500 |
| 2,2-Dimethylbutane | PASS | 500 |
| 3-Methylpentane | PASS | 500 |
| 2-Methylpentane | PASS | 500 |
| Cyclohexane | PASS | 500 |
| Neopentane | PASS | 500 |
| n-Heptane | PASS | 500 |
| n-Pentane | PASS | 500 |
| Benzene | PASS | 500 |

Microbiology

| Quantitative Analysis | Status | Sample | LOQ | Limit |
|-----------------------|-----------|--------|-------|---------|
| | Pass/Fail | CFU/g | CFU/g | CFU/g |
| Mold/Mildew/Yeast | PASS | <LOQ | 90 | 10,000 |
| Enterobacteriaceae | PASS | <LOQ | 90 | 1,000 |
| Aerobic Bacteria | PASS | <LOQ | 90 | 100,000 |
| Coliforms | PASS | <LOQ | 90 | 1,000 |

| Qualitative Analysis | Detected or Not-detected | |
|----------------------|--------------------------|--------------|
| E. Coli | PASS | Not-detected |
| Salmonella | PASS | Not-detected |
| Pseudomonas | PASS | Not-detected |

Heavy Metals

| Compound | Status | Sample | LOQ | Limit |
|----------|-----------|--------|-----|-------|
| | Pass/Fail | PPB | PPB | PPB |
| Arsenic | PASS | 64 | 25 | 1500 |
| Cadmium | PASS | <LOQ | 25 | 500 |
| Mercury | PASS | 25 | 25 | 1000 |
| Lead | PASS | <LOQ | 25 | 500 |

1. The hemp extract is the product of a batch tested by the independent testing laboratory;
 2. The batch contained a total delta-9-tetrahydrocannabinol concentration that did not exceed 0.3 percent pursuant to the testing of a random sample of the batch; and
 3. The batch does not contain contaminants unsafe for human consumption.*



Stacy Gardalen

Stacy Gardalen
Director

Kelly Zaugg

Kelly Zaugg
Quality Control



4439 Polaris Ave.
Las Vegas, NV 89103
(702)729-5180

www.dblabslv.com

The reported result is based on a sample weight with the applicable moisture content for that sample. LOQ = Limit of Quantitation. NA = Not Analyzed. ND = Not Detected. PGR = Plant Growth Regulator. Unless otherwise stated all quality control samples performed within specifications established by the Laboratory. This product has been tested by DB Labs, LLC (NMME# 61887736101164525768) using valid testing methodologies and a quality system as required by Nevada state law. Values reported relate only to the product tested. DB Labs makes no claims as to the efficacy, safety or other risks associated with any detected or non-detected levels of any compounds reported herein.*Tested analytes and limits were set by the customer. This Certificate shall not be reproduced except in full, without the written approval of DB Labs.